

By the Numbers

1992

ESTABLISHED

34

TOTAL PUBLIC ENTITIES
IN FUND

-1.49 percent

AVERAGE RATE
INCREASE OVER
PAST 5 YEARS

\$20,362,130

FUND SURPLUS

\$8,327,875

4-YEAR AVERAGE
DIVIDEND PAYMENT

1,600

EMPLOYEES

4,300

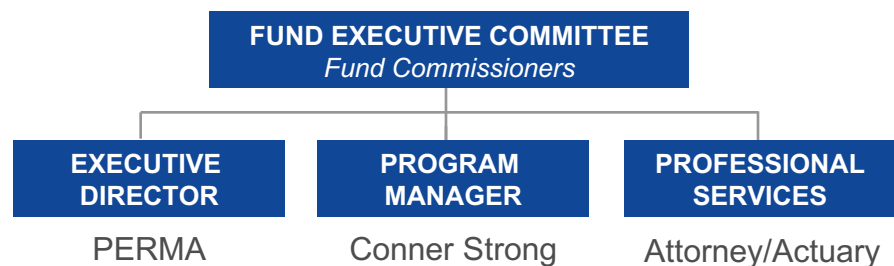
MEMBERS

PROFILE:

Central Jersey Health Insurance Fund

The Central Jersey Health Insurance Fund is available to primarily serve governmental entities and school districts in Warren, Hunterdon, Somerset, Mercer, Monmouth and Ocean Counties. The Fund contracts with Aetna & QualCare (medical), Express Scripts (pharmacy) and Delta Dental of NJ (dental).

Like all PERMA Health JIFs, each public entity appoints a Fund Commissioner to represent them. These individuals can have as little or as much involvement in shaping the Fund's overall direction as they choose. Depending on their needs, the Executive Director and Program Manager can manage every aspect of the Fund, from day-to-day functionality to vendor selection to long-range forecasting.



Our Wisdom, Your Advantage

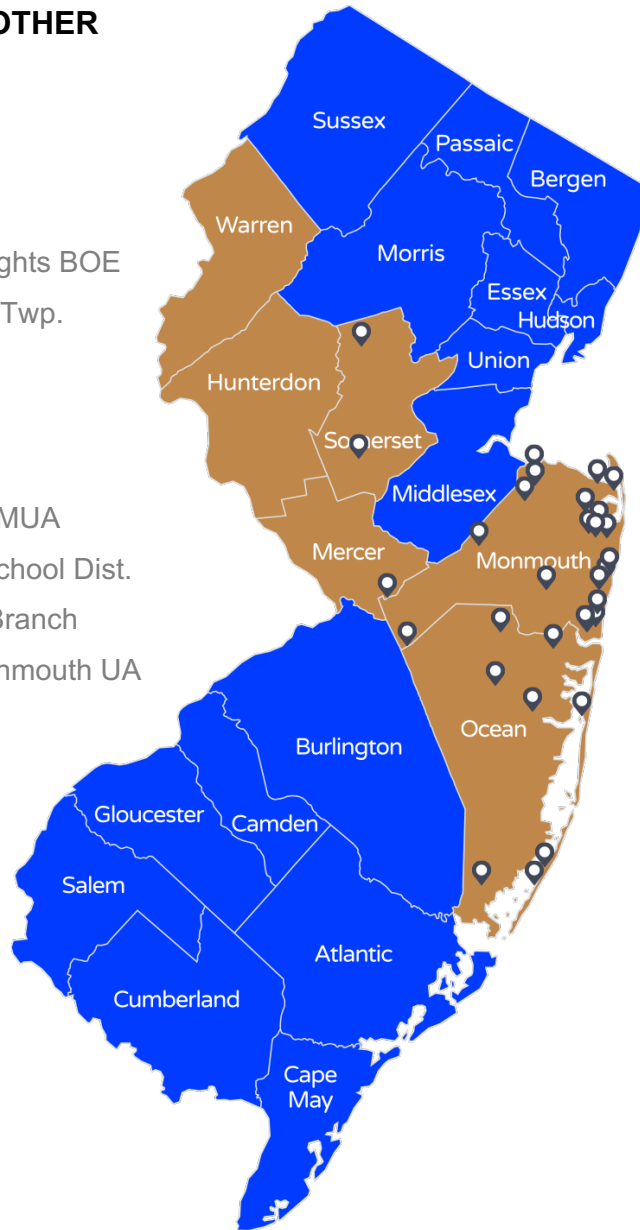
The Central Jersey Health Insurance Fund, like all PERMA Health JIFs, has a proven track-record of fiscal responsibility. The reason is the decision-making process combines our decades of public entity expertise with your needs. Together, the result is a Fund that delivers year-after-year.

You're in Good Company

SCHOOL DISTRICTS/MUNICIPALITIES/OTHER

Aberdeen
Allentown
Asbury Park
Atlantic Highlands
Barnegat Light
Bedminster
Brick Twp. Housing Auth.
Brick Twp.
Brielle
Eatontown Sewerage Auth.
Englishtown
Harvey Cedars
Highland Elementary School
Jackson
Keyport
Lakewood
Manasquan
Manasquan Reg. Sew. Auth.
Manchester
Matawan
Montgomery

Plumsted
Oceanport
Red Bank
Seaside Heights BOE
Shrewsbury Twp.
Ship Bottom
South River
Spring Lake
Toms River MUA
Tuckerton School Dist.
West Long Branch
Western Monmouth UA



Jason Edelman
PERMA Risk Management Services
1-856-552-4692
Jason@HiFundNJ.com

Sean Critchley, Esq.
PERMA Risk Management Services
1-973-659-6511
Sean@HiFundNJ.com