

# Central Jersey FUND

41

TOTAL ENTITIES

\$83M

ANNUAL BUDGET

8.79%

AVERAGE 5-YEAR  
PREMIUM INCREASE

3,500

EMPLOYEES

9,500

MEMBERS

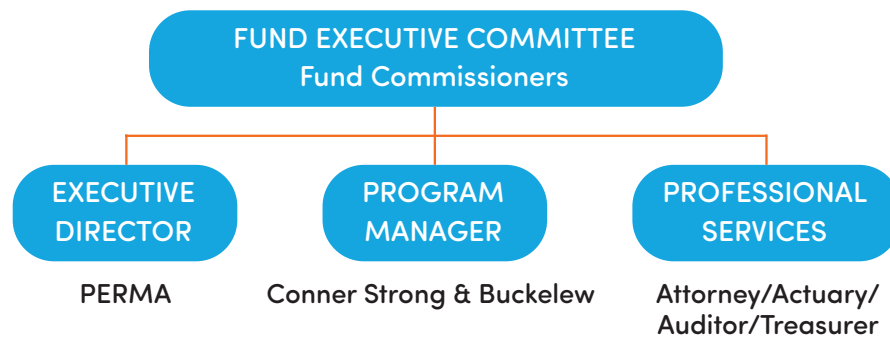
## PROFILE:

### Central Jersey Health Insurance Fund

Founded in 1992

The Central Jersey Health Insurance Fund is available to primarily serve governmental entities and school districts in Warren, Hunterdon, Somerset, Mercer, Monmouth and Ocean Counties. The Fund contracts with Aetna & Amerihealth (medical), Express Scripts (pharmacy) and Delta Dental of NJ (dental).

Health Insurance Funds, known as HIFs, are self-governed. Each public entity appoints a Fund Commissioner to represent them. These individuals can have as little or as much involvement in shaping the Fund's overall direction as they choose. Depending on their needs, the Executive Director and Program Manager can manage every aspect of the Fund, from day-to-day functionality to vendor selection to long-range forecasting.



## Our Wisdom, Your Advantage

The Central Jersey Health Insurance Fund, like all the New Jersey Health Insurance Funds - Powered by PERMA, are separate and distinct Funds that operate independently according to state law. The Funds have an over 30-year proven track-record of fiscal responsibility, transparency, flexibility, and innovating new solutions to control costs. PERMA, one of the most trusted and experienced HIF administrators in the nation, has administered various NJ HIFs for decades. PERMA provides Fund members with access to the best industry professionals, including actuaries, auditors, attorneys, qualified purchasing agents, treasurers, and underwriters.

[cjhif.com](http://cjhif.com)

Sean Critchley, Esq.  
PERMA Risk Management Services  
1-973-659-6511  
[scritchley@connerstrong.com](mailto:scritchley@connerstrong.com)

# You're in Good Company

## SCHOOL DISTRICTS/MUNICIPALITIES/OTHER

Aberdeen  
Allentown  
Atlantic Highlands  
Barnegat Light  
Bayshore Regional SA  
Bedminster Township  
Brick Twp. Housing Auth.  
Brick Township  
Brielle Borough  
Delaware River Basin Com.  
Eatontown Sewerage Auth.  
Englishtown  
Hamilton Township  
Harvey Cedars  
Highland Park  
Highland Park Borough  
Interlaken  
Jackson Township  
Keyport  
Lakewood MUA  
Lakewood Township  
Manasquan  
Manasquan River Reg. Sew. Auth.  
Manchester Township  
Matawan  
Monmouth County Bayshore OA  
Montgomery Township

Oceanport  
Plumsted MUA  
Plumstead Township  
Red Bank  
Sayerville Borough  
Seaside Heights BOE  
Seaside Park Borough  
Ship Bottom Borough  
Shrewsbury Township  
South River  
Spring Lake  
Toms River MUA  
Tuckerton Borough School Dist.  
West Long Branch  
Western Monmouth UA

