

By the Numbers

1992

ESTABLISHED

37

TOTAL PUBLIC ENTITIES
IN FUND

.17 percent

AVERAGE RATE INCREASE
OVER PAST 5 YEARS

\$66,000,000

ANNUAL BUDGET

\$11,200,000

FUND SURPLUS

\$60,900,000

DIVIDENDS

2,200

EMPLOYEES

5,940

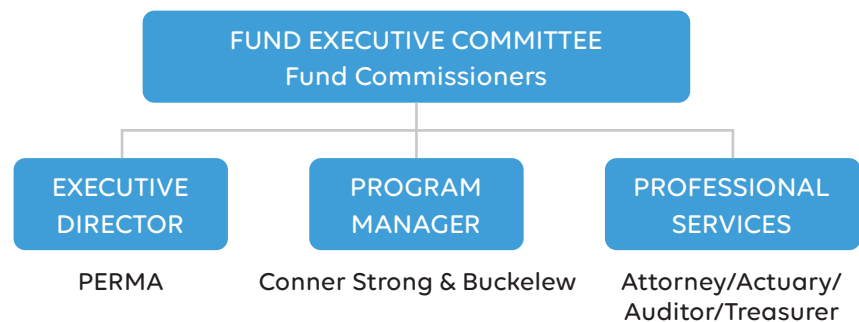
MEMBERS

PROFILE:

Central Jersey Health Insurance Fund

The Central Jersey Health Insurance Fund is available to primarily serve governmental entities and school districts in Warren, Hunterdon, Somerset, Mercer, Monmouth and Ocean Counties. The Fund contracts with Aetna & Amerihealth (medical), Express Scripts (pharmacy) and Delta Dental of NJ (dental)

Like all PERMA Health JIFs, each public entity appoints a Fund Commissioner to represent them. These individuals can have as little or as much involvement in shaping the Fund's overall direction as they choose. Depending on their needs, the Executive Director and Program Manager can manage every aspect of the Fund, from day-to-day functionality to vendor selection to long-range forecasting.



Our Wisdom, Your Advantage

The Central Jersey Health Insurance Fund, like all PERMA Health JIFs, has a proven track-record of fiscal responsibility. The reason is the decision-making process combines our decades of public entity expertise with your needs. Together, the result is a Fund that delivers year-after-year.

You're in Good Company

SCHOOL DISTRICTS/MUNICIPALITIES/OTHER

- Aberdeen
- Allentown
- Atlantic Highlands
- Barnegat Light
- Bedminster Township
- Brick Twp. Housing Auth.
- Brick Township
- Brielle Borough
- Eatontown Sewerage Auth.
- Englishtown
- Hamilton Township
- Harvey Cedars
- Highland Elementary School
- Highland Park Borough
- Interlaken
- Jackson Township
- Keyport
- Lakewood MUA
- Lakewood Township
- Manasquan
- Manasquan River Reg. Sew. Auth.
- Manchester Township
- Matawan
- Monmouth County Bayshore OA
- Montgomery Township
- Oceanport
- Plumsted MUA
- Plumsted Township
- Red Bank
- Sayerville Borough
- Seaside Heights BOE
- Ship Bottom Borough
- Shrewsbury Township
- South River
- Spring Lake
- Toms River MUA
- Toms River Township
- Tuckerton Borough School Dist.
- West Long Branch
- Western Monmouth UA

