

By the Numbers

1992

ESTABLISHED

37

TOTAL PUBLIC ENTITIES
IN FUND

.17 percent

AVERAGE RATE INCREASE
OVER PAST 5 YEARS

\$66,174,000

ANNUAL BUDGET

\$13,063,891

FUND SURPLUS

\$57,000,000

DIVIDENDS

2,200

EMPLOYEES

5,940

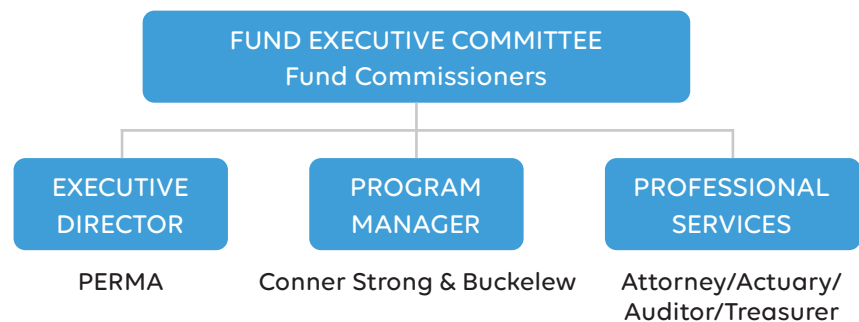
MEMBERS

PROFILE:

Central Jersey Health Insurance Fund

The Central Jersey Health Insurance Fund is available to primarily serve governmental entities and school districts in Warren, Hunterdon, Somerset, Mercer, Monmouth and Ocean Counties. The Fund contracts with Aetna & Amerihealth (medical), Express Scripts (pharmacy) and Delta Dental of NJ (dental)

Like all PERMA Health JIFs, each public entity appoints a Fund Commissioner to represent them. These individuals can have as little or as much involvement in shaping the Fund's overall direction as they choose. Depending on their needs, the Executive Director and Program Manager can manage every aspect of the Fund, from day-to-day functionality to vendor selection to long-range forecasting.



Our Wisdom, Your Advantage

The Central Jersey Health Insurance Fund, like all PERMA Health JIFs, has a proven track-record of fiscal responsibility. The reason is the decision-making process combines our decades of public entity expertise with your needs. Together, the result is a Fund that delivers year-after-year.

You're in Good Company

SCHOOL DISTRICTS/MUNICIPALITIES/OTHER

Aberdeen
Allentown
Atlantic Highlands
Barnegat Light
Bedminster Township
Brick Twp. Housing Auth.
Brick Township
Brielle Borough
Eatontown Sewerage Auth.
Englishtown
Hamilton Township
Harvey Cedars
Highland Elementary School
Interlaken
Jackson Township
Keyport
Lakewood MUA
Lakewood Township
Manasquan
Manasquan River Reg. Sew. Auth.
Manchester Township
Matawan
Monmouth County Bayshore OA
Montgomery Township
Oceanport
Plumsted MUA
Plumstead Township

Red Bank
Sayerville Borough
Seaside Heights BOE
Ship Bottom Borough
Shrewsbury Township
South River
Spring Lake
Toms River MUA
Toms River Township
Tuckerton Borough School Dist.
West Long Branch
Western Monmouth UA

