

## By the Numbers

1992

ESTABLISHED

40

TOTAL PUBLIC ENTITIES  
IN FUND

-.98 percent

AVERAGE RATE INCREASE  
OVER PAST 5 YEARS

\$61,000,000

ANNUAL BUDGET

\$13,300,000

FUND SURPLUS

\$59,000,000

DIVIDENDS

2,180

EMPLOYEES

5,820

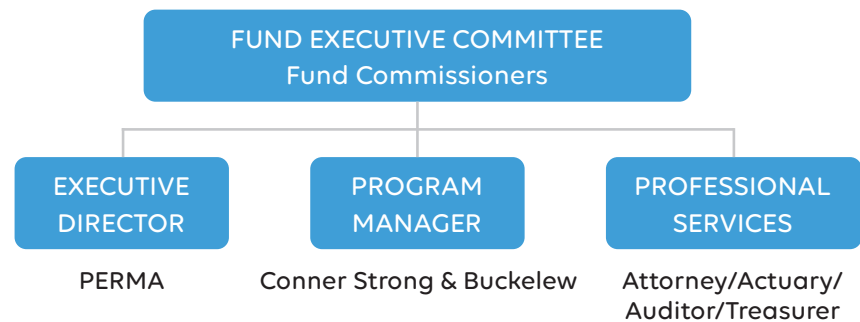
MEMBERS

## PROFILE:

# Central Jersey Health Insurance Fund

The Central Jersey Health Insurance Fund is available to primarily serve governmental entities and school districts in Warren, Hunterdon, Somerset, Mercer, Monmouth and Ocean Counties. The Fund contracts with Aetna & QualCare (medical), Express Scripts (pharmacy) and Delta Dental of NJ (dental)

Like all PERMA Health JIFs, each public entity appoints a Fund Commissioner to represent them. These individuals can have as little or as much involvement in shaping the Fund's overall direction as they choose. Depending on their needs, the Executive Director and Program Manager can manage every aspect of the Fund, from day-to-day functionality to vendor selection to long-range forecasting.



## Our Wisdom, Your Advantage

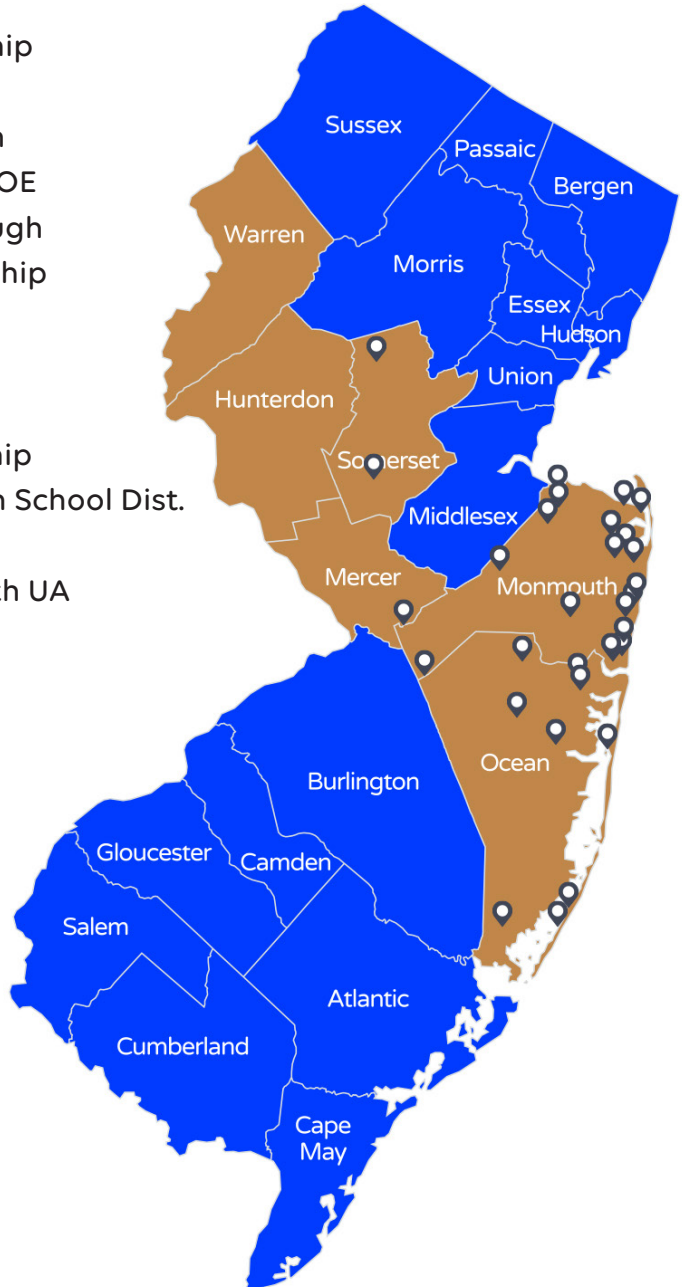
The Central Jersey Health Insurance Fund, like all PERMA Health JIFs, has a proven track-record of fiscal responsibility. The reason is the decision-making process combines our decades of public entity expertise with your needs. Together, the result is a Fund that delivers year-after-year.

# You're in Good Company

## SCHOOL DISTRICTS/MUNICIPALITIES/OTHER

Aberdeen  
Allentown  
Asbury Park  
Atlantic Highlands  
Barnegat Light  
Bedminster Township  
Brick Twp. Housing Auth.  
Brick Township  
Brielle Borough  
Eatontown Sewerage Auth.  
Englishtown  
Hamilton Township  
Harvey Cedars  
Highland Elementary School  
Interlaken  
Jackson Township  
Keyport  
Lakewood MUA  
Lakewood Township  
Manasquan  
Manasquan River Reg. Sew. Auth.  
Manchester Township  
Matawan  
Monmouth County Bayshore OA  
Montgomery Township  
Oceanport  
Plumsted MUA

Plumstead Township  
Red Bank  
Sayerville Borough  
Seaside Heights BOE  
Ship Bottom Borough  
Shrewsbury Township  
South River  
Spring Lake  
Toms River MUA  
Toms River Township  
Tuckerton Borough School Dist.  
West Long Branch  
Western Monmouth UA



Dive in to New Jersey's Safest  
Health Insurance Pool

Sean Critchley, Esq.  
PERMA Risk Management Services  
1-973-659-6511  
Sean@HiFundNJ.com